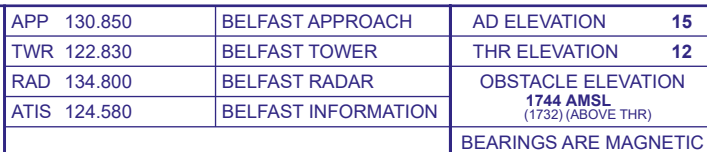
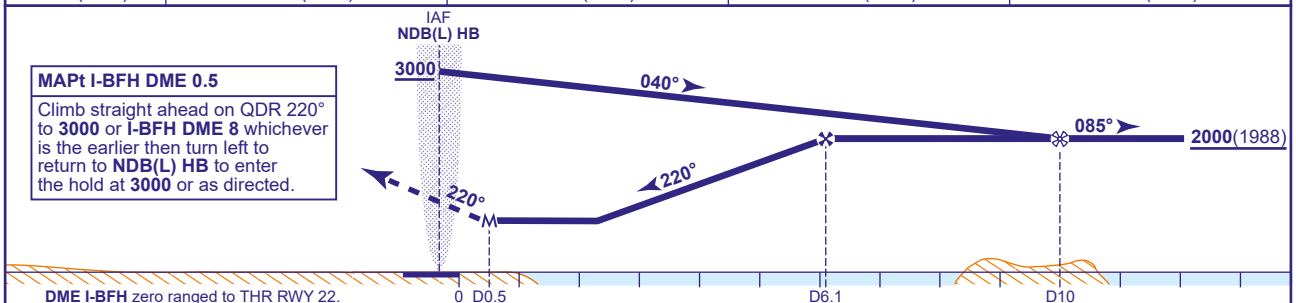


BELFAST CITY
NDB(L)/DME
RWY 22
(ACFT CAT A,B,C)



DME I-BFH	6	5	4	3
ALT(HGT)	1990(1978)	1670(1658)	1350(1338)	1030(1018)



Aircraft Category		A	B	C	Rate of descent	G/S KT	160	140	120	100	80
OCA (OCH)	Procedure	810(798)	810(798)	810(798)		FT/MIN	850	740	640	530	420
VM(C)OCA (OCH AAL)	Total Area	1040(1025)	1120(1105)	1800(1785)							
	Southeast of RWY 04/22	1040(1025)	1120(1105)	1230(1215)							

NOTE 1 FAT offset 3° from RWY C/L.
2 Direct Arrivals available on request to ATC.

CHANGE (1/25): BEL VOR RECALIBRATED. MAGEE HOLD REVISED.

AERO INFO DATE 25 OCT 24

AD 2-EGAC-8-6